

Redistributed Manufacturing in Healthcare Network (RiHN)

Professor Nick Medcalf, Loughborough University



Drivers for change

- The risk of committed capital
- Disadvantage of complex supply chains
- The range of business propositions (meta-level industries)
- ‘Piggy-backing’ technology platforms
- The challenge of capacity
- Avoidance of waste
- Customisation
- Postponed manufacture

Demands of the innovation

The traditional principle:

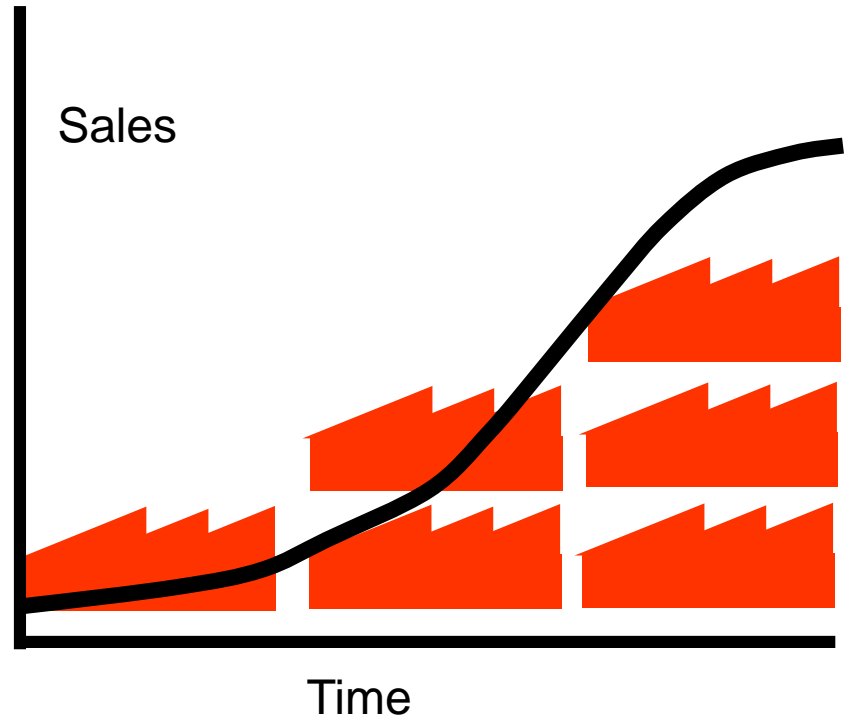
- The cost of production is borne by the manufacturer
- The benefit is gained by the
- 'Institutional memory' plays a large part in modes of healthcare provision
- Methods of supply, dispensing and application involve several functional roles
- An assumed infrastructure that has been tried and tested over long periods.

Initial capital

Traditional model

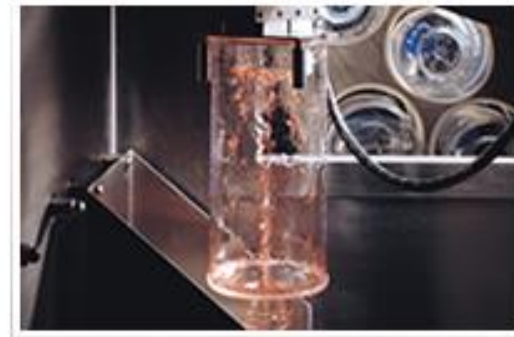


The alternative

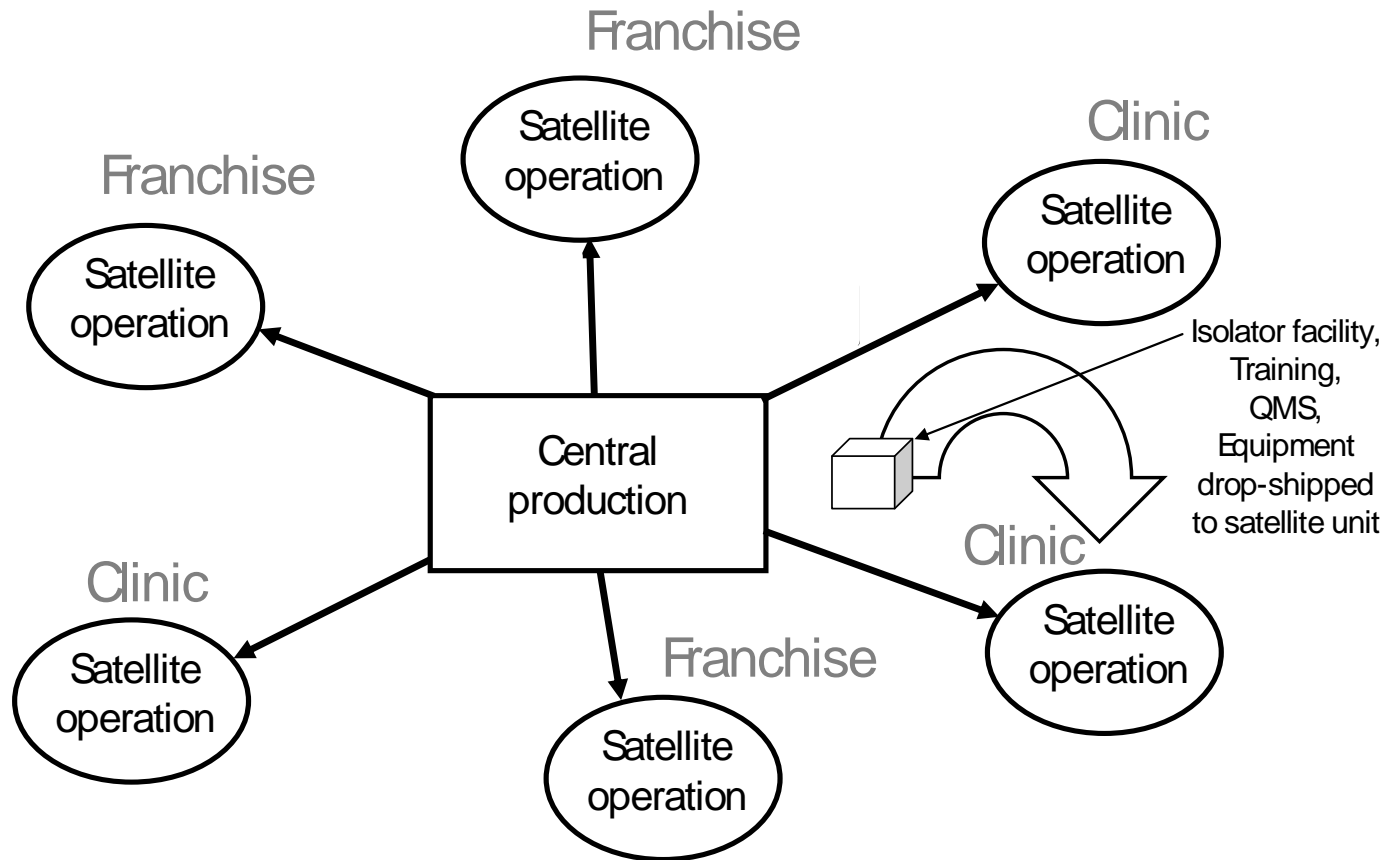


Automation

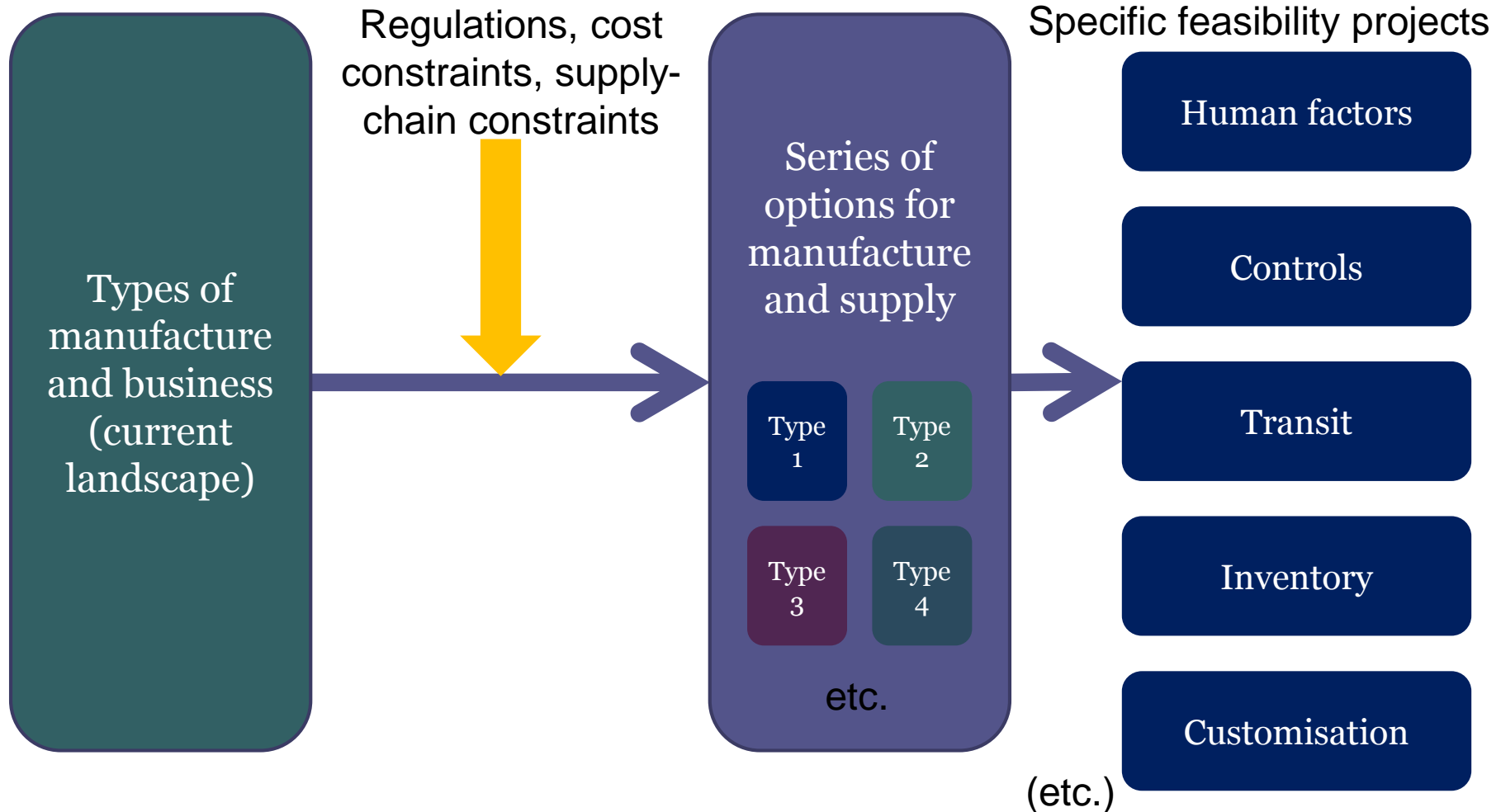
CellMate™ TAP Biosystems



Networks



Link to feasibility studies



RiHN

n.medcalf@lboro.ac.uk

T 01509 564898

M 07818 580162



The University of
Nottingham

UNITED KINGDOM • CHINA • MALAYSIA



University of the
West of England